



The Clever Curtain

INSTALLATION INSTRUCTIONS



Parts included:

- 1) Track Complete
- 2) Mounting brackets and screws
- 3) Roll/rolls of Fabric Folds



Decorative Track



Cube Track



Standard Track



Wall mount bracket for Decorative Track only



Face fit brackets for Standard/Low Profile Track only

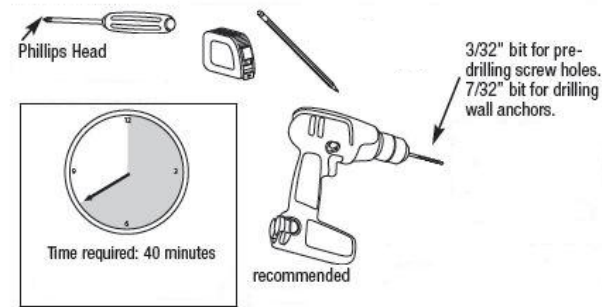


Ceiling bracket for Recess fit Standard/Low profile track only



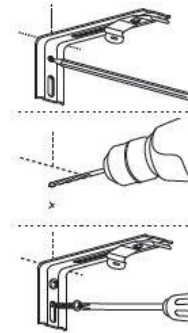
Top Hanger

1 Tools you may need



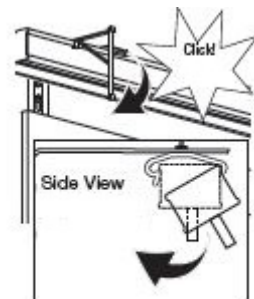
1.1 Centre headrail over window frame and mark at each end.

1.2 Align brackets along marks. Mark screw hole locations. Drill at each mark (insert wall anchors if necessary). Mount brackets.



1.3 Fit track

securely into brackets



Standard Low Profile track only

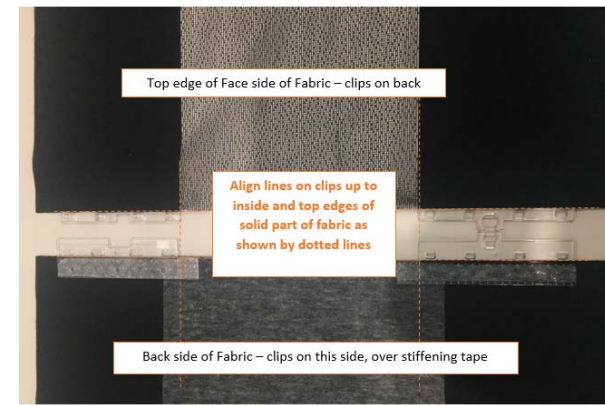


Decorative track only

**** Please note Decorative Track will already be assembled with Finials**

2 Preparing the fabric for installation

2.1 Check all hangers are aligned and secured (see diagram):



2.2 Unroll fabric without altering the order of folds.

Each section will contain pre-assembled folds in already determined hanging positions.

2.3 Do not unfold the additional folded fabric. These are used for the end pieces of fabric and centre if applicable (centre open stack only).



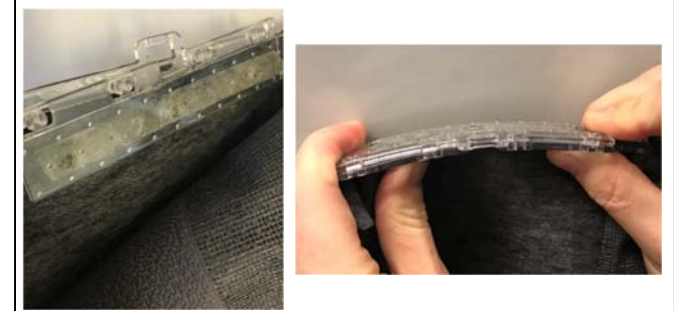
2.4 Take first piece of fabric. Fold to form a pleat.



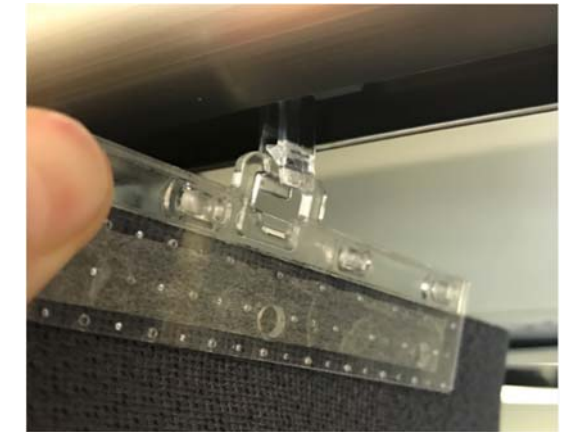
2.5 Take second piece of fabric, fold to form a pleat and lay on top of previous piece.

Making sure the new fold has the face of the fabric against the face of the fabric on the previous fold.

2.6 Secure fabric folds together by slightly bending and rocking the hangers to ensure the teeth lock into Position. Repeat this step until all folds are secure.



2.7 Clip assembled hangers into track carriers as shown below.



2.8 Check folds for any misalignment and unclip and adjust fabric on hangers if necessary.

For further information, please see Installation Video at <http://www.pacificwholesale.com.au/veri-shades-resources/>

CARE AND MAINTENANCE

The surface of Veri Shades fabric and tracks will collect a layer of dust over time. Veri Shades fabric can be lightly hand washed and dried and can also be ironed with a cool iron or steamed to remove creases.

Veri Shades tracks can be cleaned with a feather duster, or a slightly damp microfibre cloth to ensure the components are also dust free.

At least twice a year (or more in high risk environments), silicone spray should be used to lubricate all the track gears. Before spraying the tracks, remember to slide your Veri Shades fabric over to one side or cover to avoid any overspray. If spraying insecticides or any harmful chemicals the Veri Shades fabric must be moved aside. These chemicals **must not** come in contact with the blinds.

CAUTION:

Never use harsh cloths, harsh abrasives, chlorine or ammonia based chemicals or cleaners on any Veri Shades surface as they may affect the appearance, longevity and warranty of the product.